

## Features

- Compact spool valve with threaded port connections
- All exhaust ports are pipable, providing better protection against harsh environments
- Standard manual operator
- DIN, Watertight and Explosionproof solenoids available
- Single and dual solenoid constructions
- Mountable in any position

## Construction

Valve Parts in Contact with Fluids	
<b>Body</b>	Black Anodized Aluminum
<b>Spring</b>	Phosphate Treated Black Steel
<b>Shading Coil</b>	Copper
<b>Seals</b>	NBR + PUR
<b>Core and Core Tube</b>	Stainless Steel/Brass
<b>End Covers</b>	6/6 Glass Filled PA/FG
<b>Spool</b>	Aluminum
<b>Internal Parts</b>	Zamak, Steel, CA, Aluminum

## Electrical

Standard Coil and Class of Insulation	Enclosure Type	Watt Rating and Power Consumption				Spare Coil Part Number	
		DC Watts	AC Watts	VA Holding	VA Inrush	AC	DC
F	SC	3	2.5	3.5	6	400125	400125
F	SC	6.9	5	7	15	43004649	43004647
F	EF	6.9	6.3	7	10.1	266762	270007
F	WT	6.9	6.3	7	10.1	266763	270008

**Standard Voltages:** SC: 24, 120, 240 Volts AC, 50-60 Hz; 12, 24, 120 Volts DC.  
 WT and EF: 24/50-60HZ, (120/60, 110-120/50)①, (240/60, 220-240/50)② Volts AC;  
 6, 12, 24, 120 Volts DC.  
 ① Order as 120/60, 110/50  
 ② Order as 240/60, 220/50

## Solenoid Enclosures

**Standard:** - Prefix

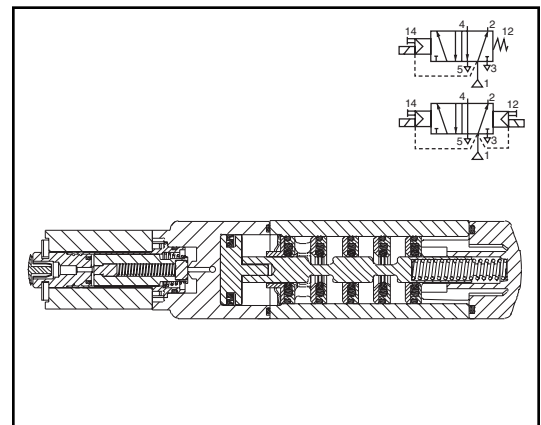
**SC** = IP65 type DIN (open frame) per 46244

**WT** = Combination General Purpose and Watertight Types 1, 2, 3, 3S, 4, and 4X

**EF** = Combination Explosionproof and Watertight Types 3, 3S, 4, 4X, 6, 6P, 7, 9 Class I, Div. 1 (Groups A - D) and Class II, Div. 1 Type 9 (Groups E-G)



4-WAY



## Nominal Ambient Temp. Ranges

**SC:** AC/DC: 5°F to +140°F (-15°C to 60°C)

**EF:** AC: 5°F to +104°F (-15°C to 40°C)

DC: 5°F to +77°F (-15°C to 25°C)

**WT:** AC: 5°F to +140°F (-15°C to 60°C)

DC: 5°F to +77°F (-15°C to 25°C)

**Note:** For temperatures below 32°F (0°C) moisture-free air must be used.

Refer to Engineering Section for details.

## Approvals

**SC** (2.5W and 3W only) UL recognized component, CSA certified.

**WT:** UL recognized component, CSA certified.

**EF:** UL and CSA listed solenoid.

Meets applicable CE directives.

Refer to Engineering Section for details.

## Note

When mounting inline 8551 valves with WT & EF solenoids (6.3 & 6.9 watts), ASCO recommends using two (2) 1/8" thick washers under the valve body to provide clearance for the solenoid coil.

**Specifications (English units)**

Pipe Size (ins.)	Orifice Size (ins.)	Cv Flow Factor	Operating Pressure Differential (psi)		Fluid Temp. °F (for single and dual solenoid)			Single Solenoid	Dual Solenoid	Watt Rating/ Class of Coil Insulation	
			Min.	Max.	Min.	Max. AC	Max. DC	Catalog Number	Catalog Number	AC	DC
<b>OPEN FRAME DIN COIL</b>											
1/4	1/4	.86	30	150	5	140	140	SC8551A017MS	SC8551A018MS	2.5	3
1/2	1/2	3.7	30	150	-15	140	140	SC8553A017MS	SC8553A018MS	5	6.9
<b>WATERTIGHT ENCLOSURE</b>											
1/4	1/4	.86	30	150	5	140	77	WT8551A017MS	WT8551A018MS	6.3	6.9
1/2	1/2	3.7	30	150	-15	140	77	WT8553A017MS	WT8553A018MS	6.3	6.9
<b>EXPLOSIONPROOF ENCLOSURE</b>											
1/4	1/4	.86	30	150	5	104	77	EF8551A017MS	EF8551A018MS	6.3	6.9
1/2	1/2	3.7	30	150	-15	104	77	EF8553A017MS	EF8553A018MS	6.3	6.9

**Specifications (Metric units)**

Pipe Size (ins.)	Orifice Size (mm)	Kv Flow Factor (m3/h)	Operating Pressure Differential (bar)		Fluid Temp. °C (for single and dual solenoid)			Single Solenoid	Dual Solenoid	Watt Rating/ Class of Coil Insulation	
			Min.	Max.	Min.	Max. AC	Max. DC	Catalog Number	Catalog Number	AC	DC
<b>OPEN FRAME DIN COIL</b>											
1/4	6	.75	2	10	-15	60	60	SC8551A017MS	SC8551A018MS	2.5	3
1/2	13	3.15	2	10	-25	60	60	SC8553A017MS	SC8553A018MS	5	6.9
<b>WATERTIGHT ENCLOSURE</b>											
1/4	6	.75	2	10	-15	60	25	WT8551A017MS	WT8551A018MS	6.3	6.9
1/2	13	3.15	2	10	-25	60	25	WT8553A017MS	WT8553A018MS	6.3	6.9
<b>EXPLOSIONPROOF ENCLOSURE</b>											
1/4	6	.75	2	10	-15	40	25	EF8551A017MS	EF8551A018MS	6.3	6.9
1/2	13	3.15	2	10	-25	40	25	EF8553A017MS	EF8553A018MS	6.3	6.9

**Dimensions inches (mm)**

Series	8551	8553
NPT	1/4	1/2
L1	6.18 (157)	7.76 (197)
L2	8.28 (210)	10.25 (260)
H1	1.10 (28)	1.58 (40)
W	1.77 (45)	2.85 (72)

NOTE: Valve shown with CM22 DIN terminal coil and connector. Connector sold separately.

