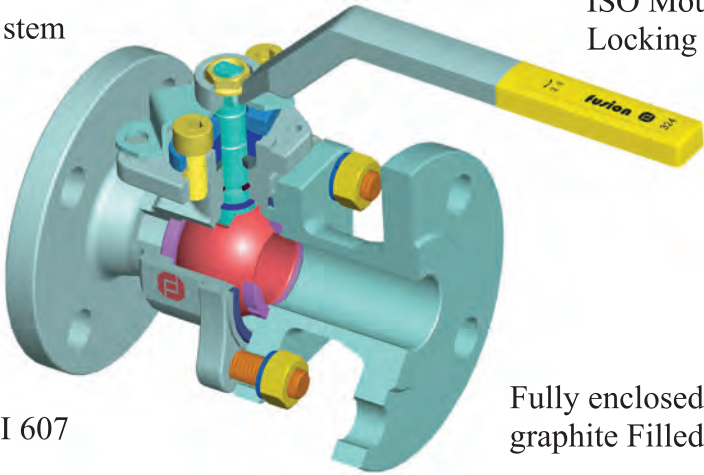


SERIES 324



Full Port Flange Valve 1/2" ~ 6" Class 150/Class 300 Raised Face

Blowout proof stem
with "O" ring
Anti-static



ISO Mounting pad
Locking device Standard

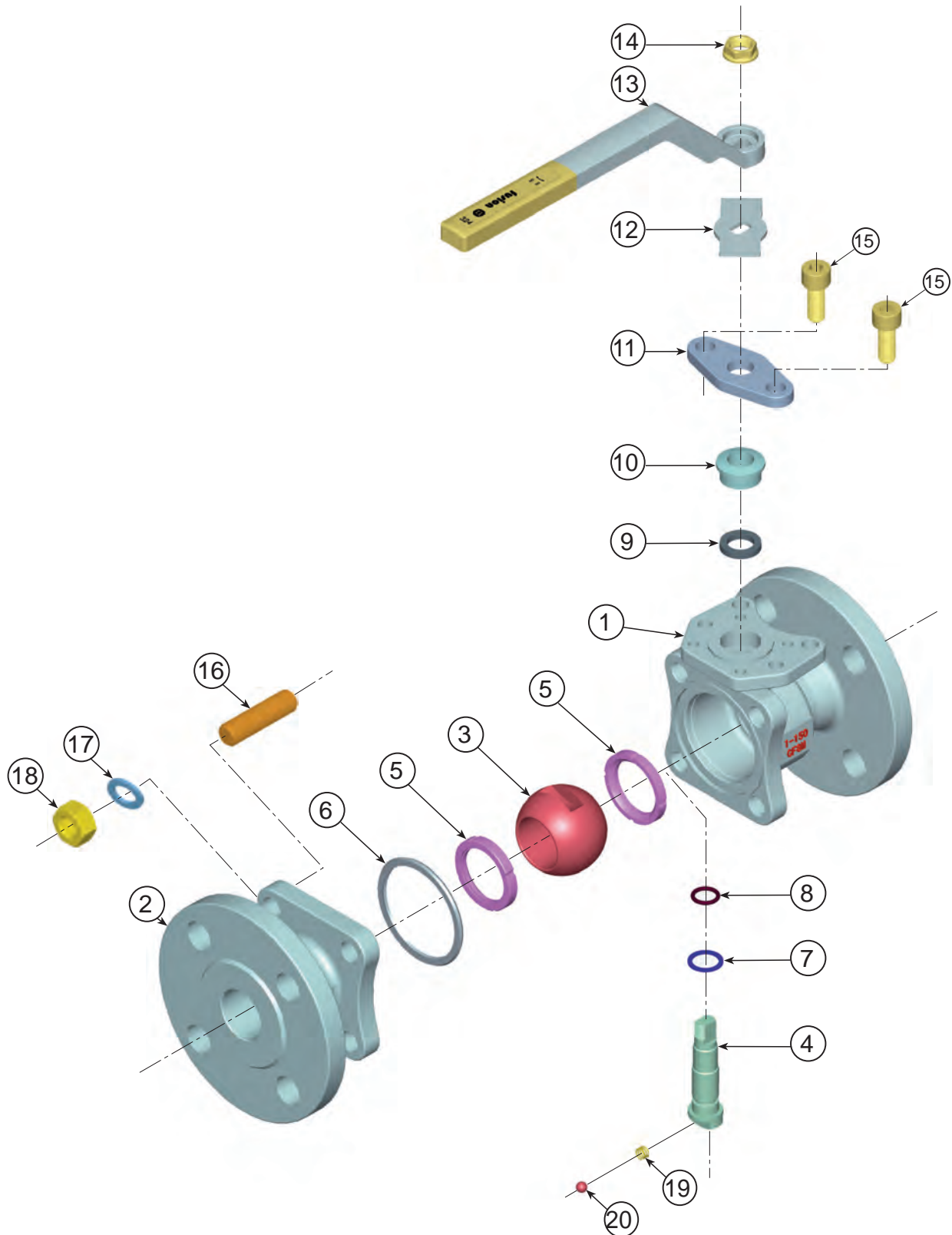
Fire safe to API 607

Fully enclosed spiral wond
graphite Filled SS body gasket

SERIES 324

Class 150 and Class 300

FLANGED BALL VALVE FULL PORT



SERIES 324

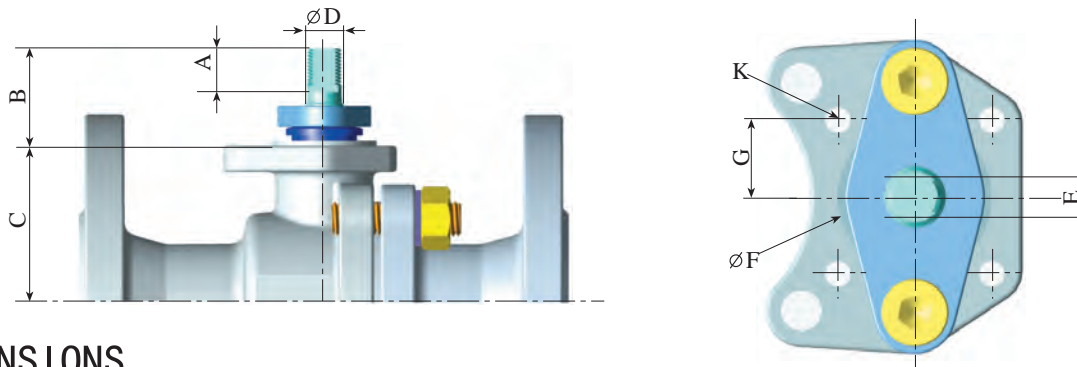


MATERIALS LIST

ITEM	PART	STAINLESS STEEL	SOUR LOW TEMP (NACE)	SOUR (NACE)	Q' TY
1	BODY	ASTM A351 CF8M	ASTM A352 LCC	ASTM A216 WCB	1
2	END CAP	ASTM A351 CF8M	ASTM A352 LCC	ASTM A216 WCB	1
3	BALL	ASTM A351 CF8M	ASTM A351 CF8M	ASTM A351 CF8M	1
4	STEM	ASTM A479 316	ASTM A479 316	ASTM A479 316	1
☆ 5	SEAT	RTFE	RTFE	RTFE	2
☆ 6	SPRIAL WOUND GASKET	316+GRAPHITE	316+GRAPHITE	316+GRAPHITE	1
☆ 7	THRUST WASHER	RTFE	RTFE	RTFE	1
☆ 8	STEM O-RING	VITON	VITON	VITON	1
☆ 9	PACKING	GRAPHITE	GRAPHITE	GRAPHITE	1
10	GLAMD	304SS	A108	A108	1
11	GLAND FLANGE	CF8	C/S	C/S	1
12	STOPER	304SS	C/S	C/S	1
13	HANDLE	CF8	C/S	C/S	1
14	HANDLE NUT	304SS	C/S	C/S	1
15	CAP SCREWS	ASTM A193 B8	ASTM A193 B8	ASTM A193 B7M	2
16	STUD	ASTM A193 B8	ASTM A193 B8	ASTM A193 B7M	4~12
17	SPRING WASHER	304SS	304SS	C/S	4~12
18	NUT	ASTM A194 8	ASTM A194 8	ASTM A194 2HM	4~12
19	SPRING	304SS	304SS	304SS	1
20	ANTISTATIC BALL	304SS	304SS	304SS	1

Note: ☆ Minor repair kit;

ACTUATOR MOUNTING DIMENSIONS



DIMENSIONS

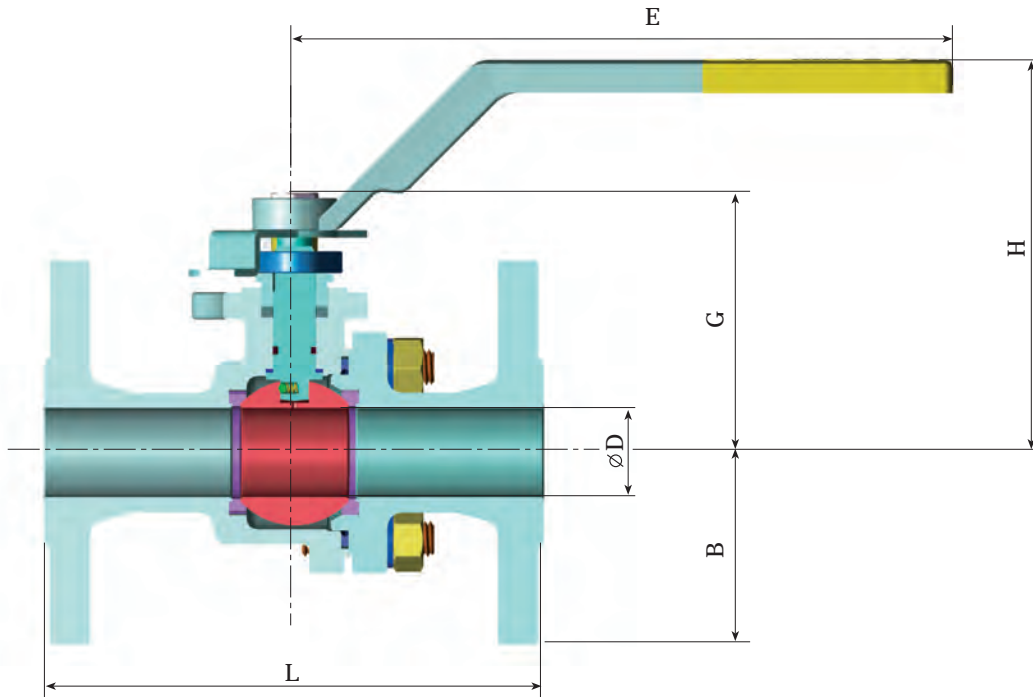
SIZE	CLASS/PN	A	B	C	D	E	F	G	K
		in / mm	in / mm	in / mm	in / mm	in / mm	in / mm	in / mm	mm
1/2 / 15	150 / 20	0.37 / 9.5	0.75 / 19	1.02 / 26	0.39 / 10	0.20 / 5	0.75 / 19	0.39 / 9.9	M5X5 DEEP
	300 / 80	0.37 / 9.5	0.75 / 19	1.02 / 26	0.39 / 10	0.20 / 5	0.75 / 19	0.39 / 9.9	M5X5 DEEP
3/4 / 20	150 / 20	0.37 / 9.5	0.81 / 20.5	1.28 / 32.5	0.39 / 10	0.20 / 5	0.98 / 25	0.50 / 12.7	M6X6 DEEP
	300 / 50	0.37 / 9.5	0.81 / 20.5	1.28 / 32.5	0.39 / 10	0.20 / 8	0.98 / 25	0.50 / 12.7	M6X6 DEEP
1 / 28	150 / 20	0.39 / 10	0.91 / 23	1.77 / 45	0.47 / 12	0.24 / 6	1.18 / 30	0.58 / 14.8	M6
	300 / 50	0.39 / 10	0.91 / 23	1.77 / 45	0.47 / 12	0.24 / 6	1.18 / 30	0.58 / 14.8	M6
1 1/2 / 40	150 / 20	0.87 / 17	1.24 / 31.5	2.34 / 59.5	0.63 / 16	0.37 / 9.5	1.38 / 35	0.70 / 17.7	M6
	300 / 50	0.67 / 17	1.24 / 31.5	2.34 / 59.5	0.63 / 16	0.37 / 9.5	1.38 / 35	0.70 / 17.7	M6
2 / 50	150 / 20	0.67 / 17	1.24 / 31.5	2.70 / 68.5	0.63 / 16	0.37 / 9.5	1.38 / 35	0.70 / 17.7	M6
	300 / 50	0.67 / 17	1.24 / 31.5	2.70 / 68.5	0.63 / 16	0.37 / 9.5	1.38 / 35	0.70 / 17.7	M6
2 1/2 / 65	150 / 20	0.87 / 22	1.69 / 43	3.11 / 79.0	0.79 / 20	0.47 / 12	2.17 / 55	0.97 / 24.7	M8
	300 / 50	0.87 / 22	1.69 / 43	3.11 / 79.0	0.79 / 20	0.47 / 12	2.17 / 55	0.97 / 24.7	M8X9 DEEP
3 / 80	150 / 20	0.87 / 22	1.65 / 42	3.54 / 90.0	0.79 / 20	0.47 / 12	2.17 / 55	0.97 / 24.7	M8X10 DEEP
	300 / 50	0.87 / 22	1.65 / 42	3.54 / 90.0	0.79 / 20	0.47 / 12	2.17 / 55	0.97 / 24.7	M8X10 DEEP
4 / 100	150 / 20	1.32 / 33.5	2.32 / 59	4.76 / 121	1.50 / 38	0.94 / 24	2.78 / 70	1.42 / 36.1	M10
	300 / 50	1.32 / 33.5	2.32 / 59	4.76 / 121	1.50 / 38	0.94 / 24	2.78 / 70	1.42 / 36.1	M10X10 DEEP
6 / 150	150 / 20	1.32 / 33.5	2.32 / 59	6.30 / 160	1.50 / 38	0.94 / 24	3.35 / 85	1.74 / 44.2	M12
	300 / 50	1.32 / 33.5	2.32 / 59	6.30 / 160	1.50 / 38	0.94 / 24	3.35 / 85	1.74 / 44.2	M12

SERIES 324



Class 150 and Class 300

FLANGED BALL VALVE FULL PORT



DIMENSIONS

SIZE in / DN	CLASS/PN	D		L		B		G		H		E		C _v gal/min
		in / mm	in / mm	in / mm	in / mm	in / mm	in / mm	in / mm	in / mm	in / mm	in / mm			
1/2 / 15	150 / 20	0.50 / 13	4.25 / 108	1.75 / 45	1.78 / 45	3.69 / 94	6.30 / 160	26						
	300 / 50	0.50 / 13	5.50 / 140	1.87 / 48	1.78 / 45	3.69 / 94	6.30 / 160	26						
3/4 / 20	150 / 20	0.75 / 19	4.62 / 117	1.94 / 49	2.07 / 53	3.98 / 101	6.30 / 160	61						
	300 / 50	0.75 / 19	6.00 / 152	2.31 / 59	2.07 / 53	3.98 / 101	6.30 / 160	61						
1 / 25	150 / 20	1.00 / 25	5.00 / 127	2.13 / 54	2.66 / 68	4.25 / 108	7.09 / 180	110						
	300 / 50	1.00 / 25	6.50 / 165	2.44 / 62	2.66 / 68	4.25 / 108	7.09 / 180	110						
1 1/2 / 40	150 / 20	1.50 / 38	6.50 / 165	2.50 / 64	3.57 / 91	4.78 / 121	11.02 / 280	260						
	300 / 50	1.50 / 38	7.80 / 190	3.06 / 78	3.57 / 91	4.78 / 121	11.02 / 280	260						
2 / 50	150 / 20	2.00 / 50	7.00 / 178	3.00 / 76	3.92 / 100	5.12 / 130	11.02 / 280	480						
	300 / 50	2.00 / 50	8.50 / 216	3.25 / 83	3.92 / 100	5.12 / 130	11.02 / 280	480						
2 1/2 / 65	150 / 20	2.50 / 64	7.50 / 190	3.50 / 89	4.80 / 122	5.83 / 148	14.17 / 360	800						
	300 / 50	2.50 / 64	9.50 / 241	3.75 / 95	4.80 / 122	5.83 / 148	14.17 / 360	800						
3 / 80	150 / 20	3.00 / 76	8.00 / 203	3.75 / 95	5.20 / 132	6.22 / 158	14.17 / 360	1150						
	300 / 50	3.00 / 76	11.12 / 283	4.13 / 105	5.20 / 132	6.22 / 158	14.17 / 360	1150						
4 / 100	150 / 20	3.94 / 100	9.00 / 229	4.50 / 115	7.07 / 180	7.87 / 200	17.72 / 450	2110						
	300 / 50	3.94 / 100	12.00 / 305	5.00 / 127	7.07 / 180	7.87 / 200	17.72 / 450	2110						
6 / 150	150 / 20	5.91 / 150	15.50 / 394	5.50 / 140	8.60 / 219	9.41 / 239	17.72 / 450	5070						
	300 / 50	5.91 / 150	15.88 / 403	6.25 / 159	8.60 / 219	9.41 / 239	17.72 / 450	5070						

NOTE: "L" DIMENSION ± 0.06 in./1.5 mm